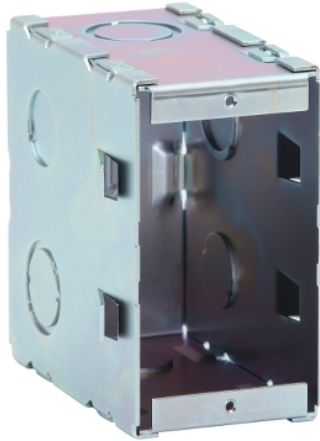


## Product data sheet

### Characteristics

# PDL141C

## Concrete Installation Flush - PDL General Accessories - 1gang



### Main

Range of product	PDL General Accessories
Product or component type	Flush mounting box
Quantity per set	Set of 20
Type of packing	Carton

### Complementary

Material	Galvanised steel
Number of gangs	1 gang
Installation direction	Horizontal Vertical
Mounting support	Wall Ceiling
Height	93 Mm internal: 110 mm external:
Width	50 Mm internal: 53 mm external:
Depth	53 Mm external: 92 mm internal:
Fixing center	84 mm
Cable entry	Top Side entry Front entry Bottom entry

### Packing Units

Unit Type of Package 1	PCE
Number of Units in Package 1	1
Package 1 Height	9.5 cm
Package 1 Width	5 cm
Package 1 Length	9 cm
Package 1 Weight	345.25 g

### Offer Sustainability

Sustainable offer status	Green Premium product
REACH Regulation	REACH Declaration
REACH free of SVHC	Yes
EU RoHS Directive	Pro-active compliance (Product out of EU RoHS legal scope)  EU RoHS Declaration
Toxic heavy metal free	Yes

Mercury free	Yes
RoHS exemption information	<a href="#">Yes</a>
China RoHS Regulation	<a href="#">China RoHS Declaration</a>
Environmental Disclosure	<a href="#">Product Environmental Profile</a>