

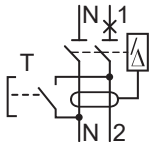


GEX26740



PLEASE NOTE

- The installation, maintenance and eventual replacement of this device must only be carried out by a qualified electrician.
- This device must not be repaired.
- All applicable local, regional and national regulations must be complied with during the installation, use, maintenance and replacement of this device.
- This device should not be installed if, when unpacking it, you observe that it is damaged.
- Schneider Electric cannot be held responsible in the event of noncompliance with the instructions in this document and in the documents to which it refers.
- The service instruction must be observed throughout the life time of this device.



Residual current circuit breaker with overcurrent protection (RCBO)
Compliant with AS/NZS 61009.1

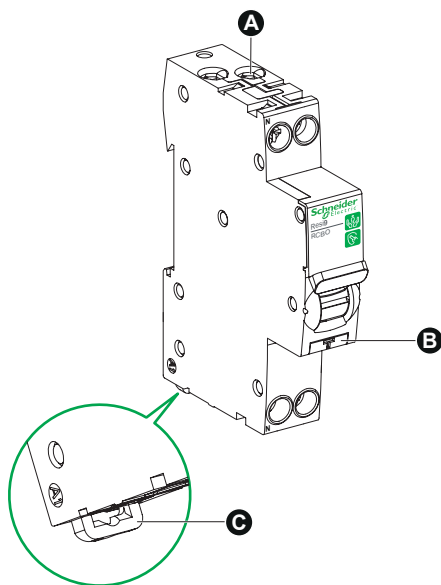
⚠ ⚠ DANGER

HAZARD OF ELECTRIC SHOCK, EXPLOSION OR ARC FLASH

- Turn off all power supplying this product before working on it.
- Use a voltage tester with a suitable rated voltage in order to check that all active conductors aren't energized.
- Carefully inspect the work area to check that no tools or objects could have been left inside the equipment.

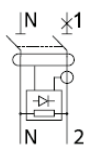
Failure to follow these instructions will result in death or serious injury.

1 Description

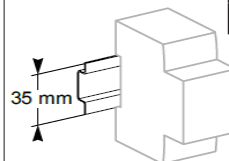
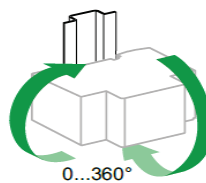
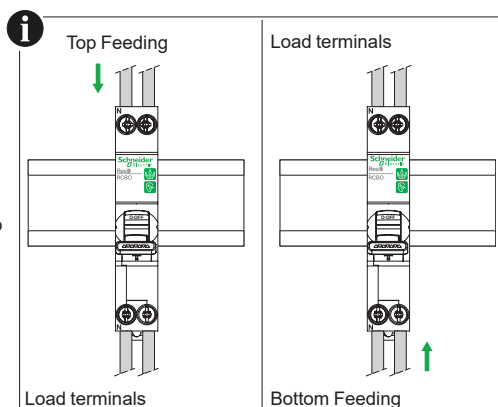


- A** Connection terminals
- B** Test button
- C** Clip for DIN rail mounting

2 Installation



When supply is connected to the bottom terminals, both Line & N bottom terminals will remain live even when toggle is switched off.



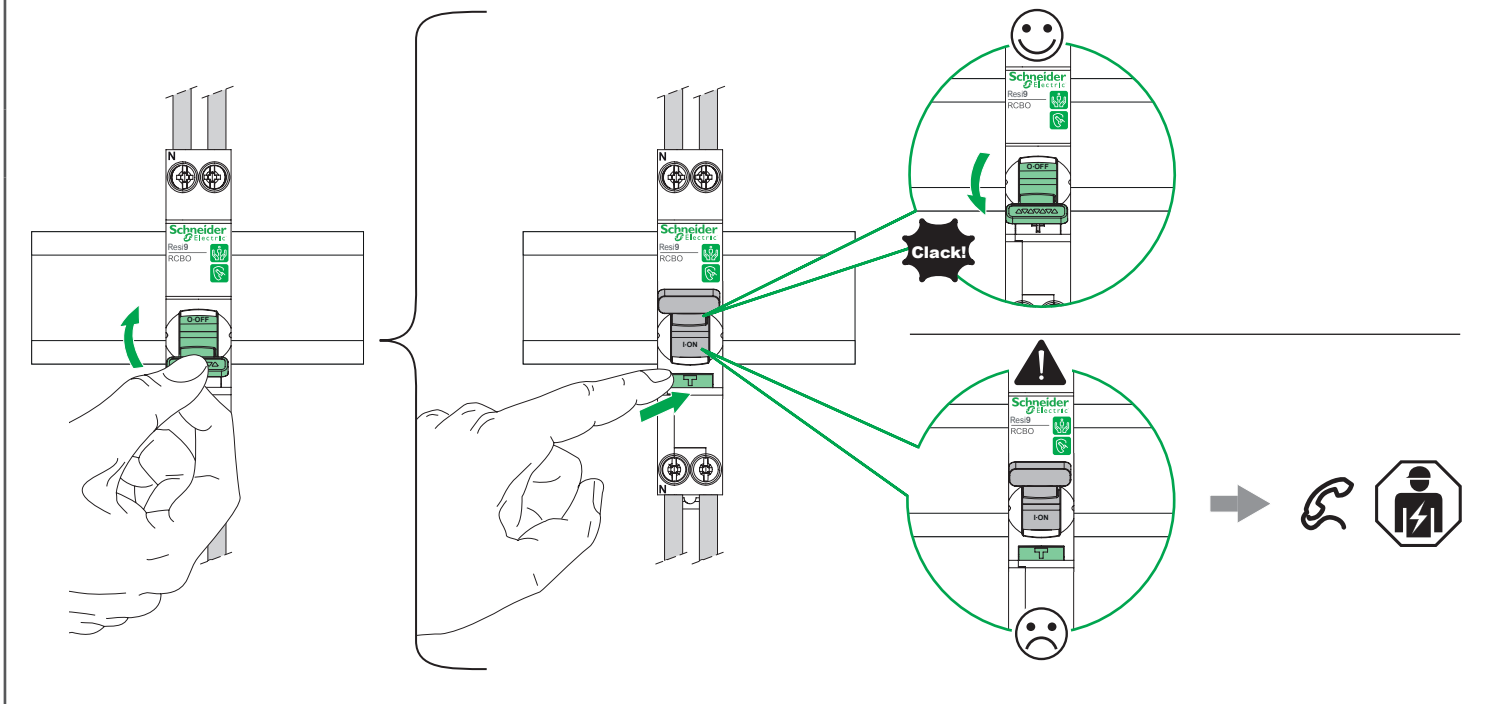
Top terminals	14 mm	1...16 mm ²	1...10 mm ²
Bottom terminals	11 mm	1...10 mm ²	1...6 mm ²

2 N.m	6 mm	PZ2

3

Regular test

Note: Test the device at regular intervals by pressing the Test button (marked T), following the intervals defined in your local regulations or monthly.



4

More information

