

# Orca OM866C-10RF (Gen 2)

Alarm Controller – Wireless Interlink



SECURE  
RADIO  
INTERLINK  
TECHNOLOGY

SPECIFICATIONS



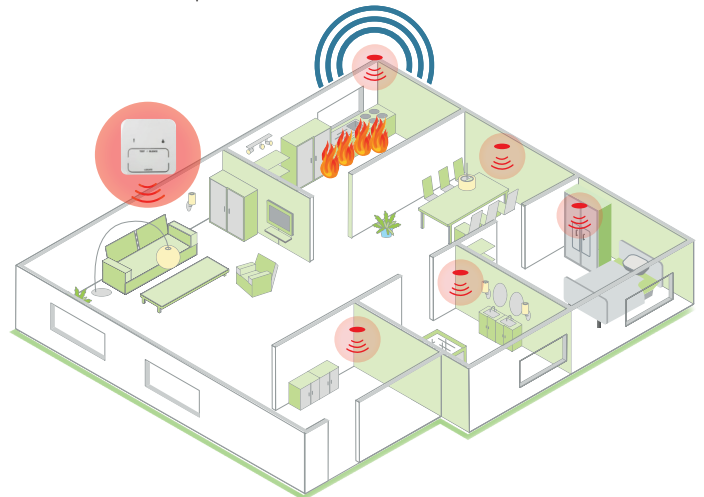
Recommended for

## Remote control of Orca Wireless Heat & Smoke alarms (Gen 2)

The Orca™ Intelligent Wireless Interlink Technology series allows multiple units to be wirelessly interlinked to protect the whole household. When one alarm activates, the entire network activates.

This control unit gives full control over a network of alarms from a central point without having to inconveniently deal with individual alarms spread throughout the house. Its capabilities include:

- Instantly hush or silence all alarms
- Instantly locate triggered alarm
- Easy testing of all networked alarms
- Comes with optional wall mount



### TECHNICAL SPECIFICATIONS

<b>DIMENSIONS</b>	90mmW x 90mmH x 22mmD
<b>POWER SOURCE</b>	3v Sealed Lithium Battery
<b>FUNCTIONS</b>	Remotely test alarms Remotely hush/silence alarms Locate original activated alarm
<b>CONNECTION</b>	Self-learn pairing
<b>MAXIMUM CONNECTED UNITS</b>	30 units
<b>OPERATING FREQUENCY</b>	868.3MHz
<b>RANGE</b>	30-50 metres
<b>LED INDICATORS</b>	Red LED (pairing with alarms) 1 Red LED every second (detected activated alarm) 1 Yellow LED every 10 seconds (low battery)
<b>CERTIFIED TO</b>	EN 62479:2010
<b>WARRANTY</b>	10 years

**DISCLAIMER** The information provided in this publication is correct to the best knowledge of the company and is given out in good faith. The information presented here is intended only as a general guide to the use of such products and no liability is accepted by Newfield Group Ltd for any loss or damage however arising, which results either directly or indirectly from the use of such information.