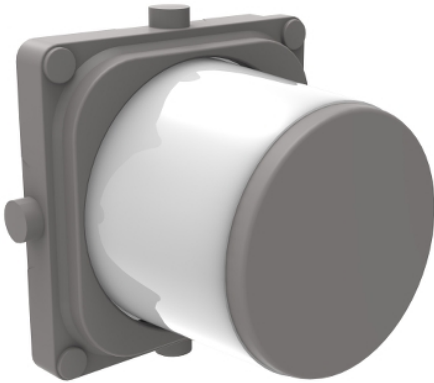


Product data sheet

Characteristics

PDLE300KBC-AG

PDL Iconic, knob for cover frame, Iconic Essence, ash grey



Main

Range	PDL Iconic
Aesthetic name	Iconic Essence
Product or component type	Knob
Colour tint	Ash grey (AG)
Type of packing	Polybag
Quantity per set	Set of 5

Complementary

Range compatibility	knob
Product destination	Cover frame
Fixing mode	Clip-in
Surface finish	Matt
Material	ABS (acrylonitrile butadiene-styrene): knob
Height	23.0 mm
Width	23.0 mm
Depth	9.0 mm
Net weight	0.06 kg

Environment

Ambient air temperature for storage	0...45 °C
Ambient air temperature for operation	0...45 °C
Relative humidity	10...95 %

Packing Units

Unit Type of Package 1	PCE
Number of Units in Package 1	1
Package 1 Weight	5.2 g
Package 1 Height	16 mm
Package 1 width	22 mm
Package 1 Length	22 mm

Offer Sustainability

EU RoHS Directive	Under investigation
-------------------	---------------------

The information provided in this documentation contains general descriptions and/or technical characteristics of the performance of the products contained herein. This documentation is not intended as a substitute for and is not to be used for determining suitability or reliability of these products for specific user applications. It is the duty of any such user or integrator to perform the appropriate and complete risk analysis, evaluation and testing of the products with respect to the relevant specific application or use thereof. Neither Schneider Electric Industries SAS nor any of its affiliates or subsidiaries shall be responsible or liable for misuse of the information contained herein.